

# CREATING THE CALUMET HERITAGE AREA

The Calumet is a region of diverse communities, innovative industries, and resilient ecosystems. To highlight the region’s significance, partners are working to create a Calumet Heritage Area (CHA). The CHA will bring people together across state lines to conserve natural and cultural heritage, improve recreational opportunities, promote regional arts, support sustainable economic development, and create heritage-oriented educational programing.


## WHY A NATIONAL HERITAGE AREA?

Congress designates NHAs to recognize lived-in places where natural, cultural, historic, and recreational resources intersect. NHAs collaborate with area residents and organizations by using local, grass-roots, community-driven approaches to heritage conservation, community revitalization, and economic development. NHAs are not National Parks: rather the National Park Service (NPS) partners with the local community, providing technical assistance and distributing matching federal funds from Congress to a NHA.

The CHA will connect the region’s two National Parks, local parks, trails, tourism gateways, and historical sites, and promote these places to locals and tourists with enhanced signage, maps, and educational materials. Most importantly, it will bring people together to learn about the Calumet’s rich cultural and natural heritage.




FOR MORE INFORMATION, VISIT [WWW.CALUMETHERITAGEAREA.ORG](http://WWW.CALUMETHERITAGEAREA.ORG)

The Calumet Voices, National Stories exhibition series is a collaborative effort of the Calumet Curators, a group of natural heritage of the Calumet region. The Calumet Heritage Partnership, the Calumet Collaborative, and the Field Museum lead the effort to designate the Calumet region as a National Heritage Area.



ArceLorMittal

Lead Partner in the Calumet Region:



Calumet Heritage Partnership

# CALUMET VOICES / NATIONAL STORIES

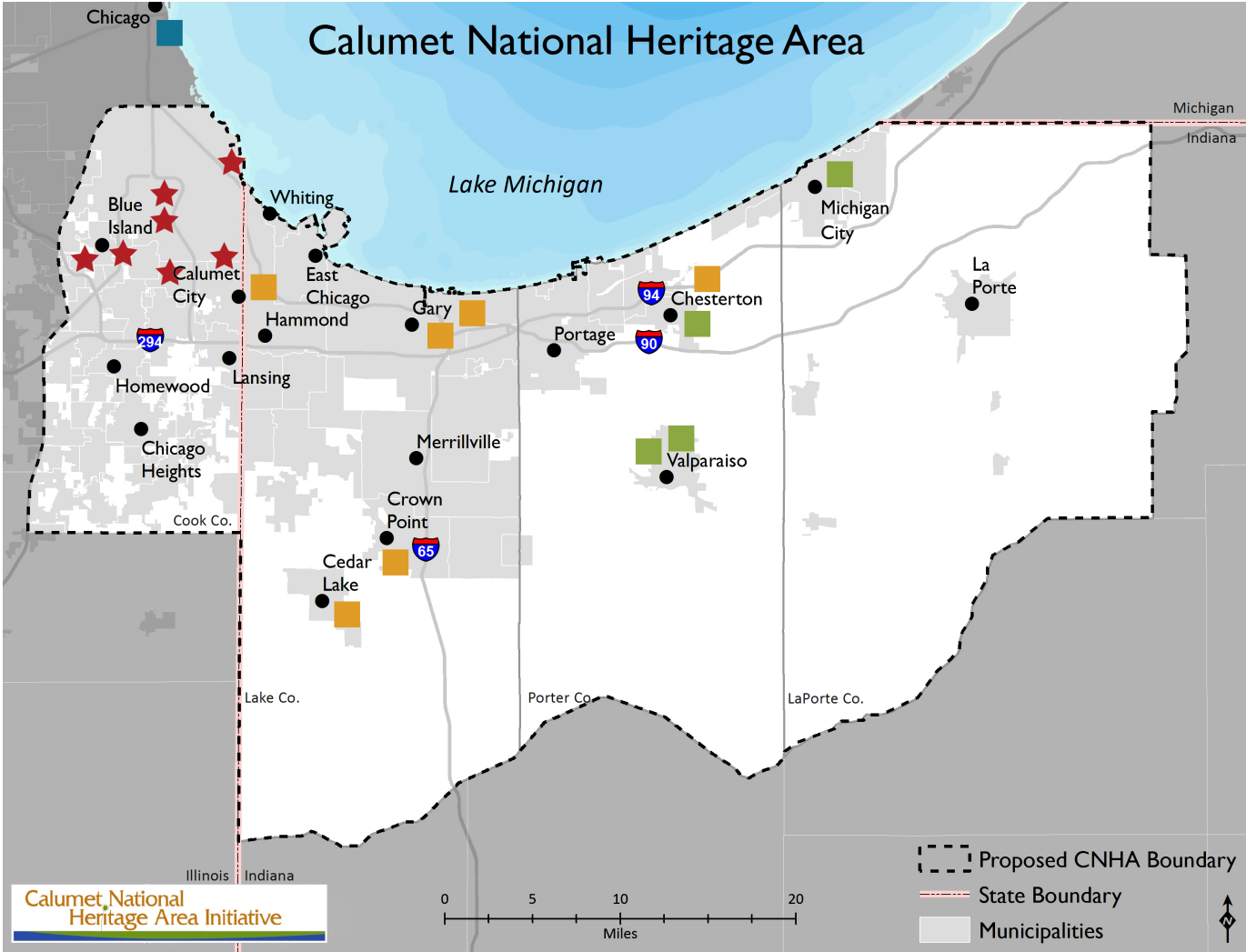
# ABOUT THE EXHIBITION

Discover an unexpected national treasure located at the southern end of Lake Michigan through the *Calumet Voices, National Stories* exhibition series. The Calumet region, shaped by generations of community grit and passion, is home to rare ecosystems and monumental steel mills. Learn about the unique relationship between nature, world-class innovation, and artistic expression that makes this region like no other.

In this collaborative three-part series of exhibitions located across the region, local museums and history centers present their collections and stories. Each exhibition is unique—but all invite visitors to share their voices and become part of the fourth, summative exhibition at the Field Museum.

- ★

The first exhibition opens June 2019 at the Historic Pullman Foundation and National Park Service Visitor Information Center.
- The second exhibition opens January 2020 at the Gary Public Library and Cultural Center.
- The third exhibition opens July 2020 at the Brauer Museum of Art, Valparaiso University.
- The summative exhibition opens February 2021 at the Field Museum.



## CALUMET CURATORS AND EXHIBITION PARTNERS

*Calumet Curators* is a network of museums, galleries, and local history centers that showcase the rich cultural, natural, and industrial heritage of the Calumet region. Formed by the Calumet Heritage Partnership, they collaborate on exhibitions, programming, convenings, and a regional guide to local heritage organizations.

- Barker Mansion**  
[barkermansion.com](http://barkermansion.com)  
631 Washington Street  
Michigan City, IN 46360

**Blue Island Historical Society**  
[blueislandhistoricalsociety.com](http://blueislandhistoricalsociety.com)  
13018 Maple Avenue  
Blue Island, IL 60406

**Brauer Museum of Art, Valparaiso University**  
[valpo.edu/brauer-museum-of-art](http://valpo.edu/brauer-museum-of-art)  
13018 Maple Avenue  
Blue Island, IL 60406

**Calumet Heritage Partnership**  
[calumetheritage.org](http://calumetheritage.org)  
13300 S Baltimore  
Chicago, IL 60633

**Cedar Lake Historical Association**  
[cedarlakehistory.org](http://cedarlakehistory.org)  
7408 Constitution Avenue  
Cedar Lake, IN 46303
- Crown Point Community Library**  
[crownpointlibrary.org/research](http://crownpointlibrary.org/research)  
122 North Main Street  
Crown Point, IN 46307

**Field Museum**  
[fieldmuseum.org](http://fieldmuseum.org)  
1400 S Lake Shore Drive  
Chicago, IL 60605

**Gary Public Library**  
[garypubliclibrary.org/indiana-room](http://garypubliclibrary.org/indiana-room)  
220 W 5th Avenue  
Gary, Indiana 46401

**Hammond Public Library**  
[hammond.lib.in.us/local-history](http://hammond.lib.in.us/local-history)  
564 State Street  
Hammond, IN 46320
- Historic Pullman Foundation**  
[pullmanil.org](http://pullmanil.org)  
11141 S Cottage Grove  
Chicago, IL 60628

**Lakeshore People's Museum**  
100 N Lake Street  
Gary, IN 46403

**Northwest Indiana Steel Heritage Project**  
[nwsteelheritagemuseum.org](http://nwsteelheritagemuseum.org)

**People for Community Recovery**  
[peopleforcommunityrecovery.org](http://peopleforcommunityrecovery.org)  
13330 S Corliss Avenue  
Chicago, IL 60827

**Porter County Museum**  
[pocomuse.org](http://pocomuse.org)  
153 Franklin Street  
Valparaiso, IN 46383
- Pullman National Monument**  
[nps.gov/pull/index](http://nps.gov/pull/index)  
11141 S Cottage Grove  
Chicago, IL 60628

**Robbins History Museum**  
[robbinshistorymuseum.org](http://robbinshistorymuseum.org)  
3644 W 139th Street  
Robbins, IL 60472

**Southeast Chicago Historical Museum**  
9801 S Avenue G  
Chicago, IL 60617

**Westchester Township History Museum**  
[chestertonin.org](http://chestertonin.org)  
700 W Porter Avenue  
Chesterton, IN 46304