

Tall Tree Workbook

Part 1



For the Fun with Free Motion Quilting
group sew-along

FMQ design by Sandra Pearson
Workbook by Lennea Wolfe

*Pattern(s) Trim the Tall Tree and Little Bit Shorter Tall Tree
by Cindy Edgerton*

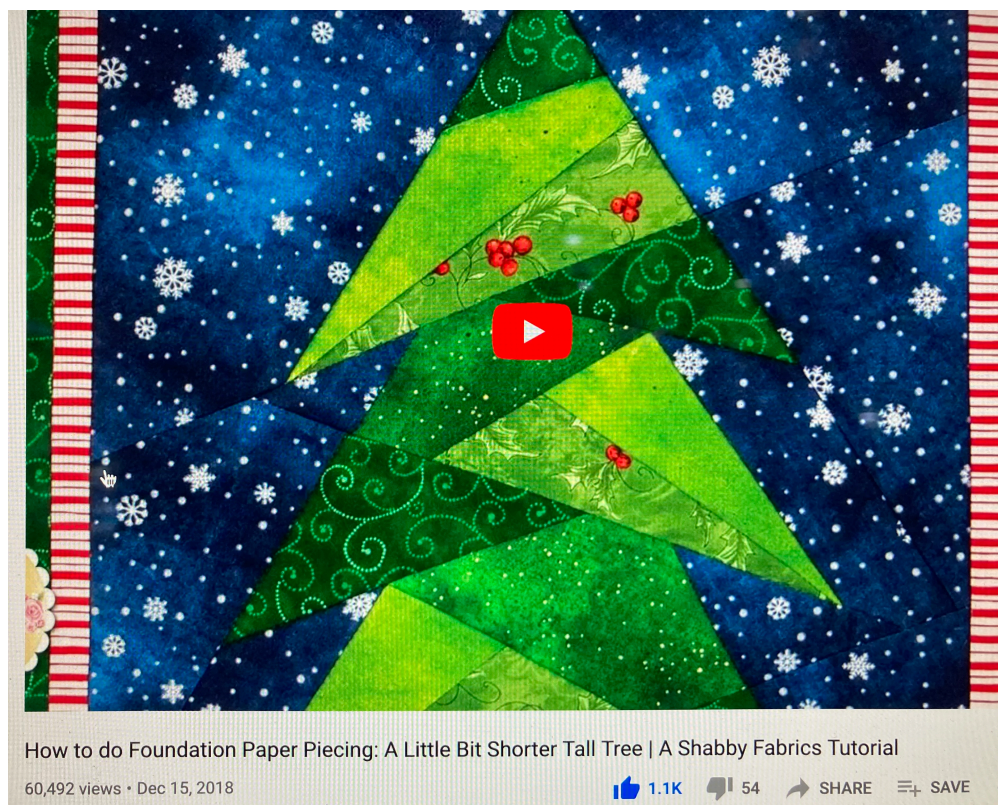
Tall Tree Workbook

- 1) Materials for project
- 2) Fabric selection
- 3) Organizing your project
- 4) Sewing your Tall Tree
- 5) Finishing your Tall Tree
- 6) Decorating your Tall Tree
- 7) Lighting your tall tree!
- 8) Quilting your Tall Tree

This is a very nice video by Shabby Fabrics that talks about colors selection, materials and also demos the piecing. This is specifically for the Little Bit Shorter Tall Tree. The same principals will apply to the full size Tall Tree.

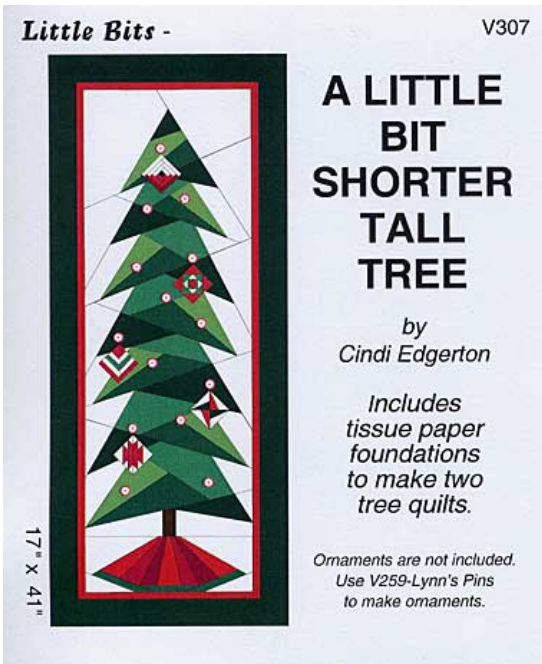
(Click on the YouTube link. The photo is only a photo!)

<https://youtu.be/7q7-Ks8Ax9w>



Materials/Supplies for Project

(Trim the Tall Tree (TTT) or Little Bit Shorter Tall Tree (LBSTT), by Cindi Edgerton available on Amazon, Etsy, or Cindi's website, <https://www.averyspecialcollection.com/index.html>). If you live outside the US, contact Cindi for shipping or check local de-stashing groups, eBay or Etsy.



This is the pattern we are using to **demo** in the workbook. Note that each pattern contains two sets of tissue paper foundations for making two tree quilts.

If you are making the large TALL tree, you will follow the fabric requirements on that pattern.

Fabric/Materials required:

Green 1 - **Dark** - 1/2 yard (includes green border)

Green 2 (**Light/Lime**) - 1/4 yd

Green 3 (**Light**) - 1/4 yd

Green 4 (**Medium**) - 1/4 yd

White 1 - print 1/3 yd

White 2 - white 1/4 yd

White 3 - cream 1/4 yd

Reds (tree skirt, assorted) - 7 pieces cut 2.5" x 6"

Red border, narrow 1/8 yd

Brown - scrap for trunk

Binding - 1/3 yd

14 buttons for hanging ornaments (optional for TTT). You can decide this later!

Supplies required:

- **Pattern**
 - (**Little Bit Shorter Tall Tree and Tall Tree** by Cindi Edgerton are available on Amazon, Etsy, local quilt shops, online quilting shops or directly from Cindi's website, <https://www.averyspecialcollection.com/index.html>).
 - Each pattern contains two tissue sets to make two trees. You will use the tissue set to do your paper piecing.
 - If you live outside the US, contact Cindi for shipping or check local de-stashing groups, eBay or Etsy.
 - Please note that Cindi's pattern is copyrighted and members may NOT make copies to send to other members as this is a copyright violation.
- **Add-a-quarter ruler.** These can ordered online from almost any major company like Missouri Star Quilting or from Amazon and are available in most quilt shops. You can use the 6" for the smaller tree, but if you are making a full size tree you will need the 12" size.
- **Large flat flower pins.** You can have a pin in the tissue/fabric and still use your Add a Quarter ruler, so they are very handy.
- **Acrylic template material (optional)**, cut 2.5" along edge of 8x11 square
- **Index card** or small piece of thick paper
- **Small baggies or bins** for organizing your fabric (snack size and sandwich size). You will need 9 baggies or small bins or other organizing system for the 9 sections of the tree.

You can make either the TTT or LBSTT. It is your choice. Follow the fabric yardage selection for the tree that you plan to make.

LBSTT (small size) is used to demo here for the workbook, but I will making the TTT (large size) along with the group.

Material Selection

You will be using four different greens, three different reds, one brown and one or more white/off white for the background.

The pattern gives excellent suggestions for use of medium/light/dark greens. Either solids or prints can be used, or a combination. You can use “holiday” prints or any “blender” fabrics. A smaller print will work better than a large scale print.

I have made the pattern using only one white for the background and using multiple off-whites. It is more work to use multiples and I preferred the single tone background. As always, it is your choice but I didn’t find the extra effort worth using multiple tones.

All the pieces in this smaller version of the tree can be cut from layer cakes if you happen to have something suitable in your stash.



Don’t be afraid to make a colorful tree! If you love purples, or reds or blues, go for it!

I made this purple Little Bit Shorter Tall Tree two years ago, and keep it up all winter. You can use any color scheme that you prefer. Just remember that you will need a variety of tones, light to dark, for your project.

I have made these patterns half dozen times at this point. Sometimes my color combos worked; other time they could have been better. **Keep in mind that G2 and G3 always join together.** Always! And they form many of the tree “limbs”. They should have sufficient contrast with each other, both in terms of color and pattern density.

Large scale patterns do not work well as most of the pattern gets lost. Pair a solid or blender (G2) with a small to medium scale pattern in a deeper hue (G3).

Here is the sample LBSTT that I made for the workbook. I decided to fussy cut the cardinal print for this one.



Now let's get to work and make one!

Organizing your Project

Pick your Pattern:

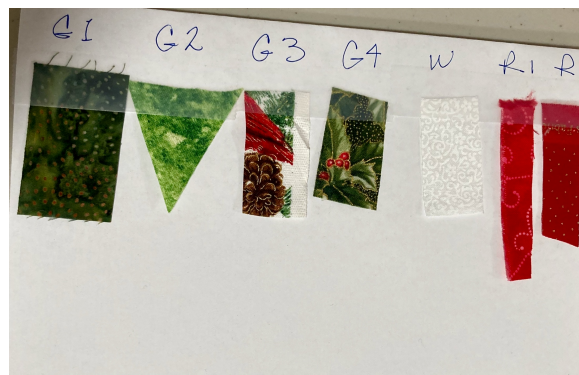


You can make either a LBSTT or TTT. Use the yardage chart on the pack of the pattern for selecting fabrics.

Make a swatch card:

We recommend using an index card or other piece of sturdy paper/ cardboard and taping your fabric choices along with their assigned number. to the card. This will help you keep your fabrics organized as we work on the project.

Here is my selection card for this LBSTT:



My acrylic piece, 1/4" ruler and flat flower head pins.



Label 9 baggies or bins for your pieces.

Part 1, Part 2, etc through Part 9. Note that the further down the list you go, the more pieces you will have for each part.



Cut ALL your fabric pieces for your tree using the pattern fabric guide and Pre-cutting guidelines in the pattern. Check off each piece cut as you work through each Part on the guideline list.

Start with Part 1 and cut each color to the specified size. Stack your pieces in order, right side down. When you are done with one stack, flip it over and put into the baggie or bin. Now each piece will be ready in order when you start to sew.



Note: Some of you may already tempted to jump in and not follow the directions. I can't stop you, but I can tell you that your project will go together more smoothly, more quickly and with less seam ripping (!!) if you cut ALL your pieces FIRST.

Take your pattern out and cut out your sections from ONE of the tissue patterns. Arrange in order, Part 1 - Part 9. Clip together to keep them in order. Pattern pieces should face right side up.

A note about the pattern pieces: the printing is light and we need to be careful to keep them all facing the same direction. **You can make it right side up or right side down. But be consistent.** I have a couple of sections that got sewn the wrong side up lying around in drawer. That also means that you will need to cut a new section out of your second tissue set to correct your error. Yikes! It is very difficult to rip seams out of a fully sewn section as the tissue paper is a bit delicate.

Sewing your Tall Tree

The video link on the first page of this workbook demonstrates how to sew the paper pieces together. Instructions are also in your Tall Tree pattern.

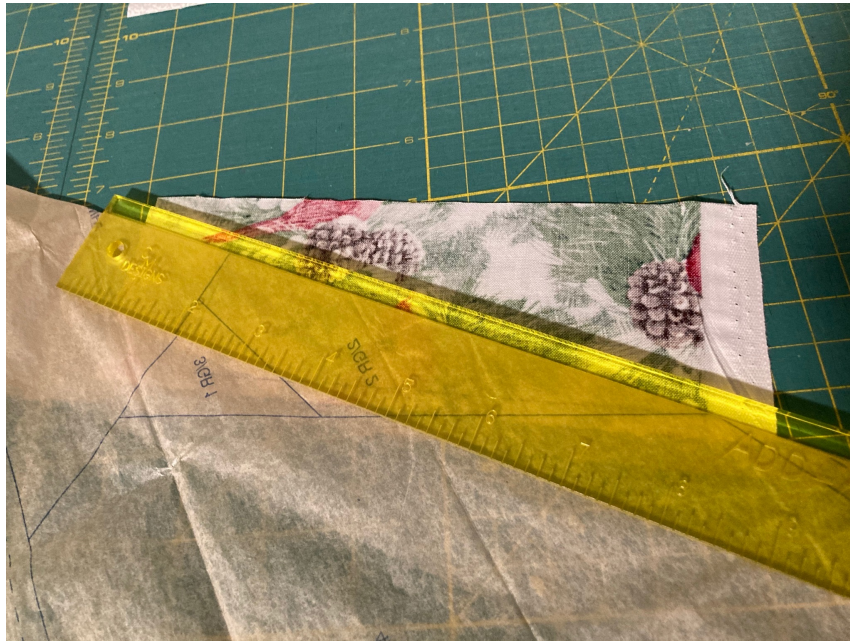
The marking on the tissue show the order to add your pieces. Colors are abbreviated, G-1 (Green 1) with a number in front of it. That is the order you add your pieces. The first piece can be pinned with a long flat flower head pin. The second piece will then lie against it as demonstrated, right sides together. Be sure your size will cover all areas of the section by holding them together and flipping the piece towards the tissue. A few of them can be tricky! Stitch on the top, through the paper, following each line. Stitch all the way out through the 1/4" seam allowance.



Fold your tissue back, over a narrow piece of acrylic along the seam line with the Add a quarter ruler nestled against the folded tissue. Cut your 1/4"



seam allowance. Use your piece of acrylic to create a clean fold along the next section of pattern.



Add your sections carefully. Part 1 below, followed by Parts 2, 3 & 4.







Our tree is growing!



Use a DRY iron as steam will wrinkle the tissue. The tissue will remove more easily if you use a smaller stitch (I used a 2.25 length for the demo.)

Sew all 9 sections together. Use smaller pieces of leftover green for the narrow sections along the bottom of the tree skirt.



The pattern has directions for adding your narrow border and wide border. We will add the borders in the next workbook. Remove the tissue as directed. (I removed mine after the narrow border addition).

Part 2 will cover borders, adding lights to your tree, and adding decorations such as buttons and appliqué. And of course, FMQ for your tree! Part 2 will be released July 12, 2021 (Monday).

FFMQ will have a TTT thread posted each Monday for you to share you work and ask questions if you need help.

Have fun! Ask for help if you need it!