

EVOLUTION EDGES™

A DIVISION OF CHEMUNG SUPPLY



VIBRATION SUPPRESSION TECHNOLOGY

VST™ Poly-Carbide Cutting Edge Innovation

VST™ Vibration Suppression Technology

Adhered Cover Blade

5

Carbide Edge

3

1 Poly

2 Bushing

4 Steel-Carbide Blade

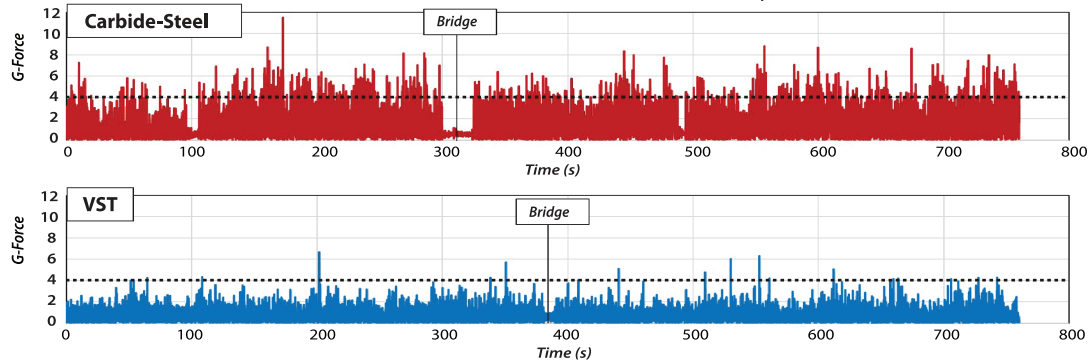
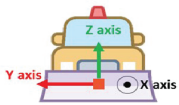
- **Increases Safety**
- **Reduces Driver Fatigue**
- **Lower Cost**
- **Increases Blade Life**
- **Reduces Road Wear/Damage**

PATENTED

X-Axis = Positive G Forces of Cutting Edge Against Road Surface

X-Axis=Positive G Forces Forward Y-Axis=Positive G Forces Laterally Z-Axis=Positive G Forces Forward

Control of a Total 760 seconds for each experiment



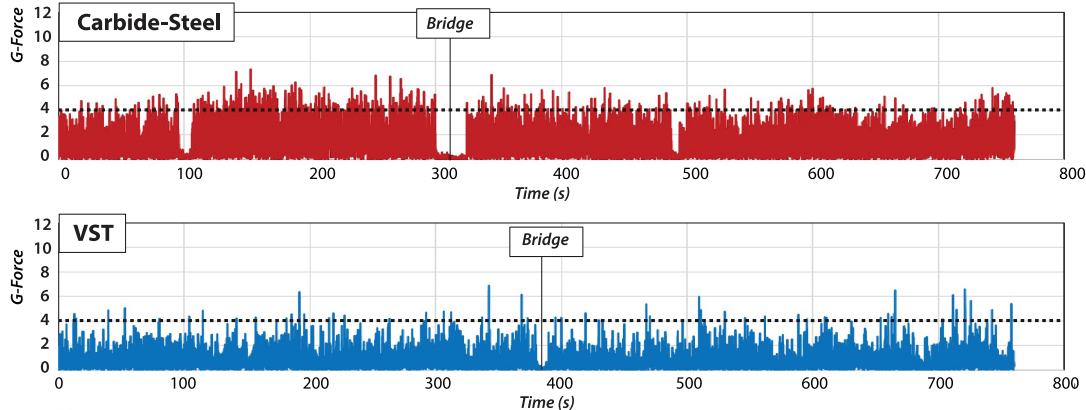
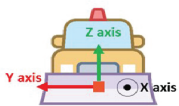
Summary of Results X-Axis

G Force Events	Carbide-Steel Blade	VST Blade	Test Results
Count of Forces Over 4G	569	18	25X Reduction in X
Average G Force	1.47G	0.73G	2X (50%) reduction in X
Max G Force	11.50G	6.64G	2X (50%) reduction in X

This metric represents long term wear and catastrophic impact to plow.

Z-Axis= Positive G Forces Transferred to Moldboard, Truck Frame and Driver

Control of a Total 760 seconds for each experiment



Summary of Results Z-Axis

G Force Events	Carbide-Steel Blade	VST Blade	Test Results
Count of Forces Over 4G	439	52	VST had 9X reduction in Z
Average G Force	1.45G	0.77G	VST had 2X reduction in Z
Max G Force	7.34G	6.68G	VST had .1X reduction in Z

Vibration Testing prepared by the independent lab: **ip Capital Group Strategy Advisor**

For more information, contact:

Daren R. Lynch
Director, Business Development
315.663.6529
DLynch@EvolutionEdges.com

Jason Eoff
Regional Manager - West
505.975.0035
JEoff@EvolutionEdges.com



EVOLUTION EDGES
A DIVISION OF CHEMUNG SUPPLY
2420 Corning Road
Elmira, New York 14903