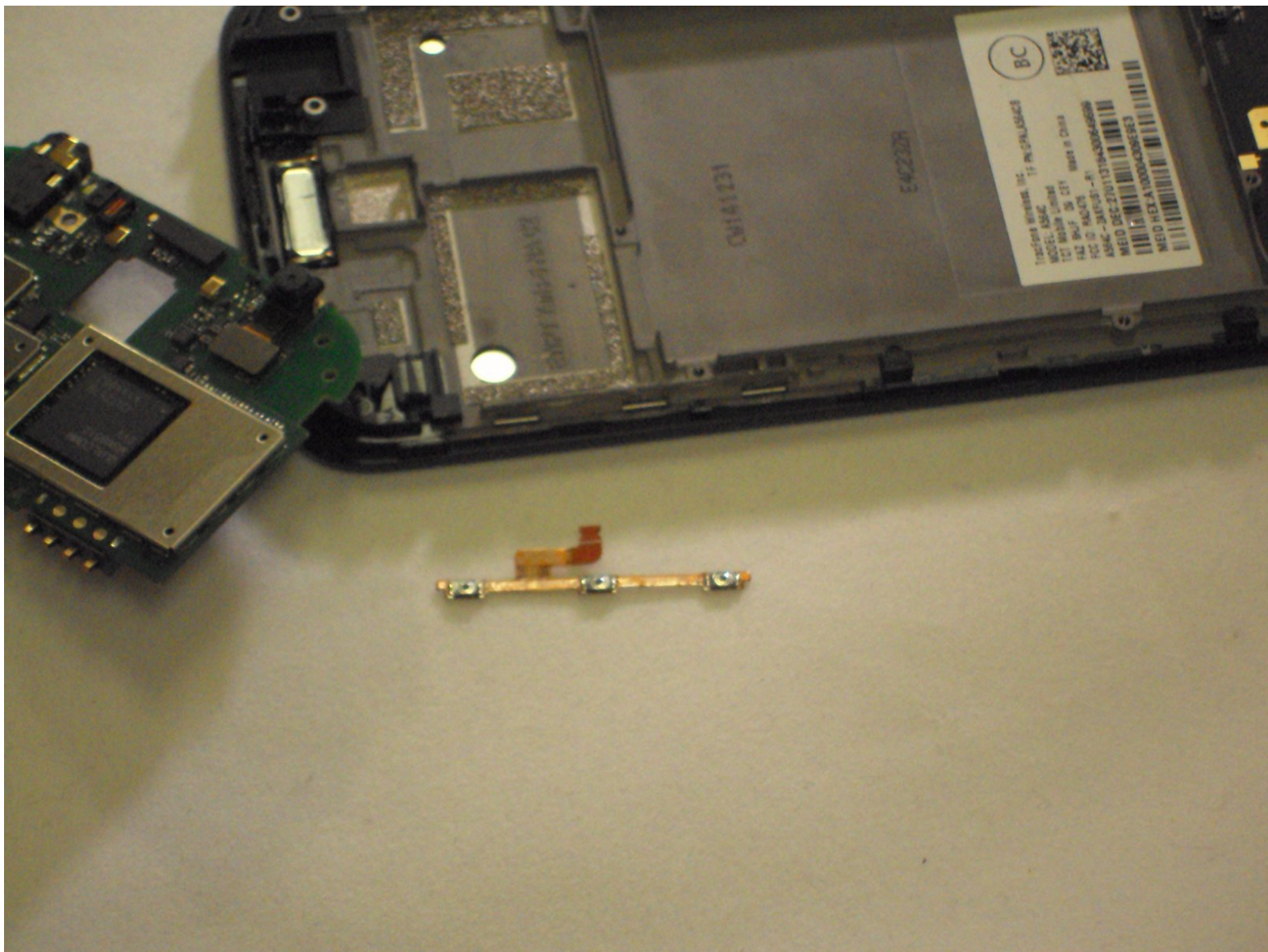




# Alcatel OneTouch Pop Icon Control Buttons Replacement

In this guide you will remove the power and volume control buttons.

Written By: Matthew Sheldon



---

## INTRODUCTION

Replacing the control buttons is a moderately difficult process that is best done if you are comfortable working with the internal components of electronics. Make sure, that when using the metal spudger that may cause electrostatic discharge, to ground yourself by touching a metal object before using the spudger.



### TOOLS:

- [Tweezers](#) (1)
  - [Metal Spudger](#) (1)
  - [iFixit Opening Tools](#) (1)
  - [JIS Driver Set](#) (1)
-

## Step 1 — Battery



- Shut down the device
- Flip the phone so that the screen is facing the surface you are working on
- ⚠ Aggressive prying may result in damaging the back panel or the internal contents of the phone.
- Use the plastic opening tool to gently pry off the back panel. There is a small notch in the bottom left corner of the phone that you can use for increased leverage.

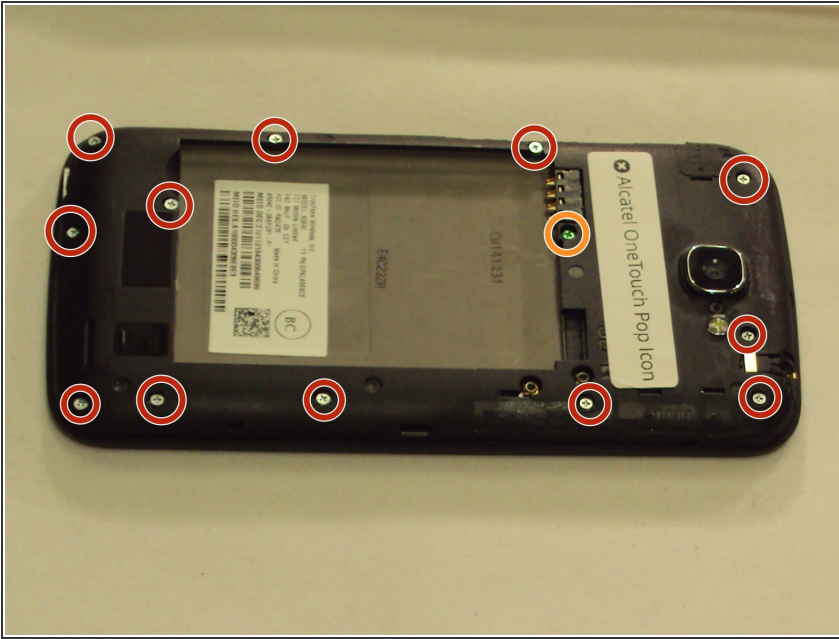
## Step 2



- Use your thumbnail to lift the battery from the phone.

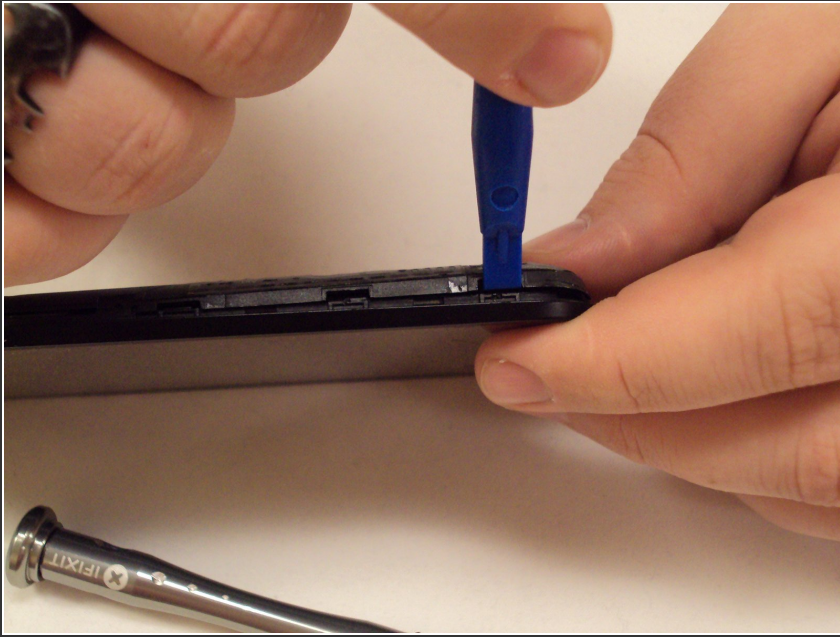


## Step 3 — Interior Back Panel



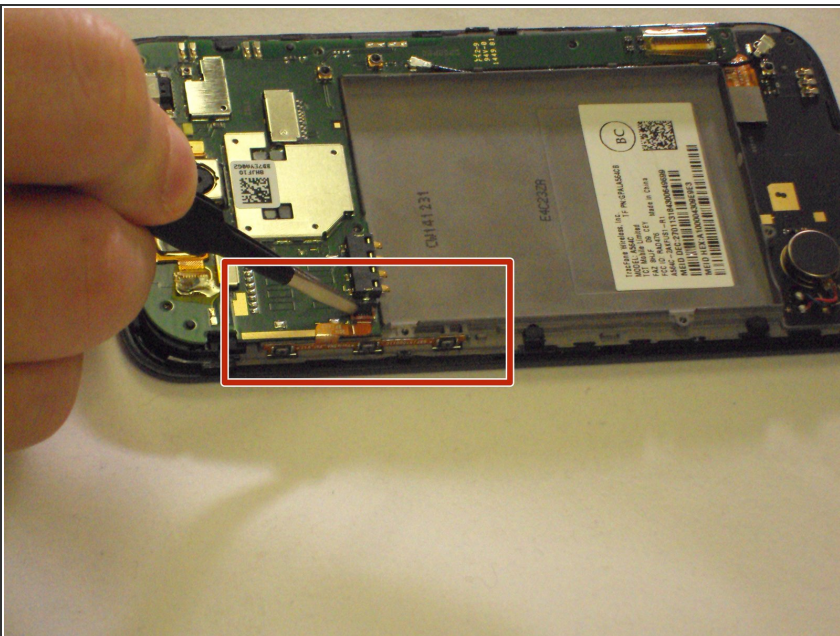
- Using the J000 Phillips screwdriver, remove the twelve silver 3mm screws.
- Using the J000 Phillips screwdriver, remove the one green 3mm screw.

## Step 4



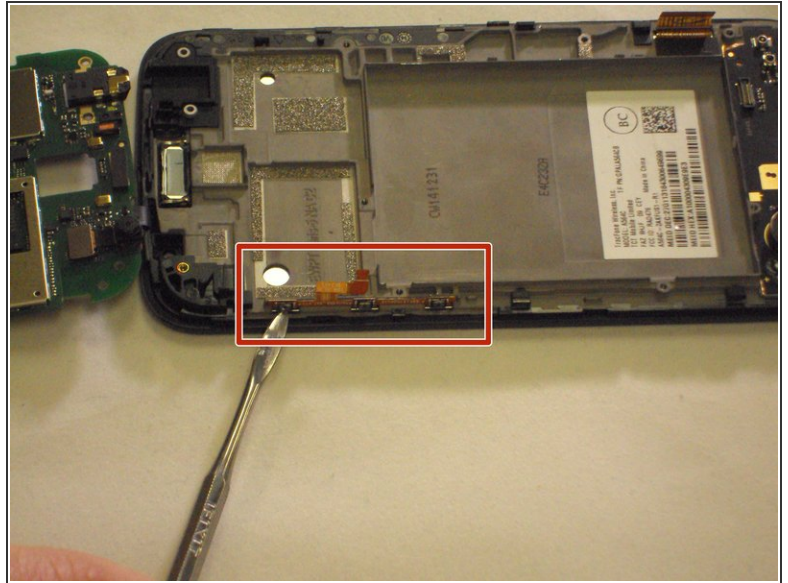
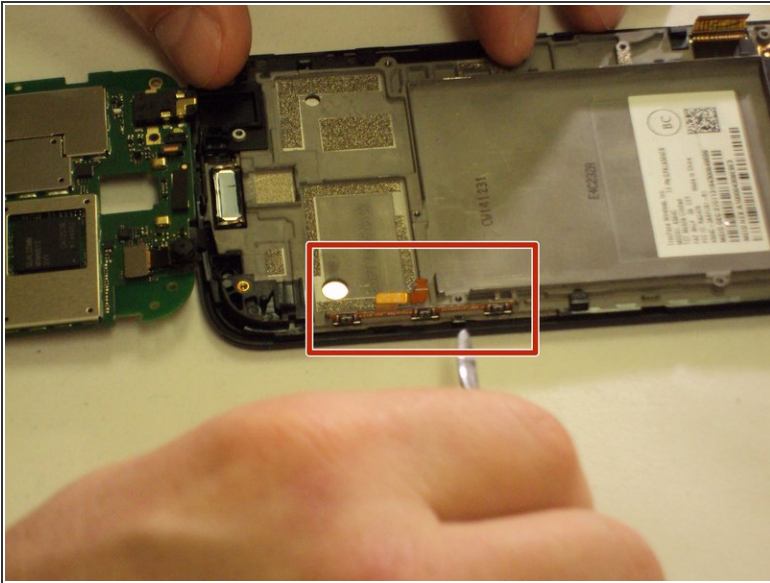
- With the screen facing you and the front facing camera to your right, insert the plastic opening tool between the screen and the interior back panel and gently pry it off.
- ⓘ Make sure all of the clips come undone when you pry the seam loose.

## Step 5 — Control Buttons



- Lift the latch and gently remove the ribbon from the latch.

## Step 6



- Use the metal spudger to gently pry the control buttons from the case.
- ⓘ The control buttons are glued to the case and are on a computer ribbon. When removing them it is best to move between them so as to avoid damaging them.
- ⓘ Make sure to use a plastic opening tool or nylon spudger before attempting to use a metal spudger. Metal spudgers can potentially damage your device.

To reassemble your device, follow these instructions in reverse order.