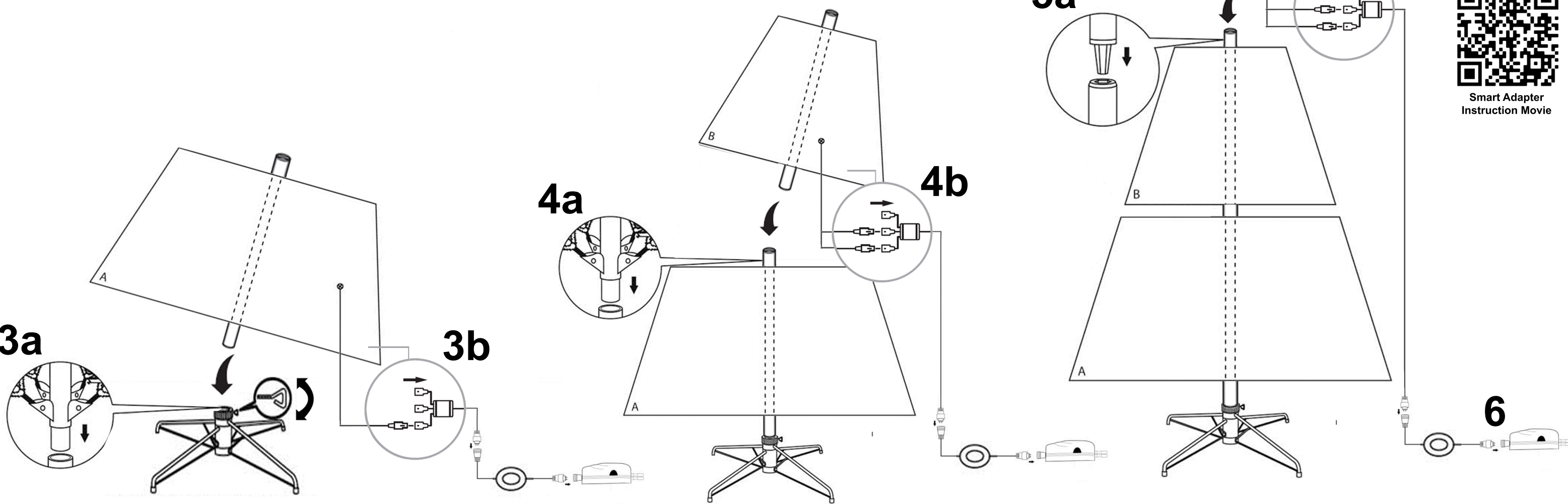


# MANUAL - HINGED CONSTRUCTION - SMART LED



Smart Adapter Instruction Movie



Android



iOS

**! IMPORTANT!** Make sure the plugs / adapter are not plugged in an outlet before building up the tree.

1/2. Install the metal base. Slide the legs apart until they are square to each other in an x shape.

3a. Place the lower trunk part of the artificial Christmas tree (part A) as far as possible in the metal base. Tighten the screw evenly so that the trunk is straight and firm in the base.

3b. Connect the first power cord to the connector.

3c. Start by folding out the branches, working your way up from the bottom.

4a. Place the middle trunk part of the artificial Christmas tree (part B). Unfold all branches.

4b. Connect the power cord to the connector.

5a. Finally, place the top of the artificial Christmas tree (part C). Unfold all branches.

5b. Connect the power cord to the connector.

6. Run all power cords down the center of the tree. Connect the foot switch and smart adapter to the connector.

To download the free Royal Christmas App, you can scan the QR code below for Android or iOS.

Store all parts in the supplied storage bag.